

LIRR Expansion Project Floral Park to Hicksville

Village of New Hyde Park Board Meeting
December 19, 2019

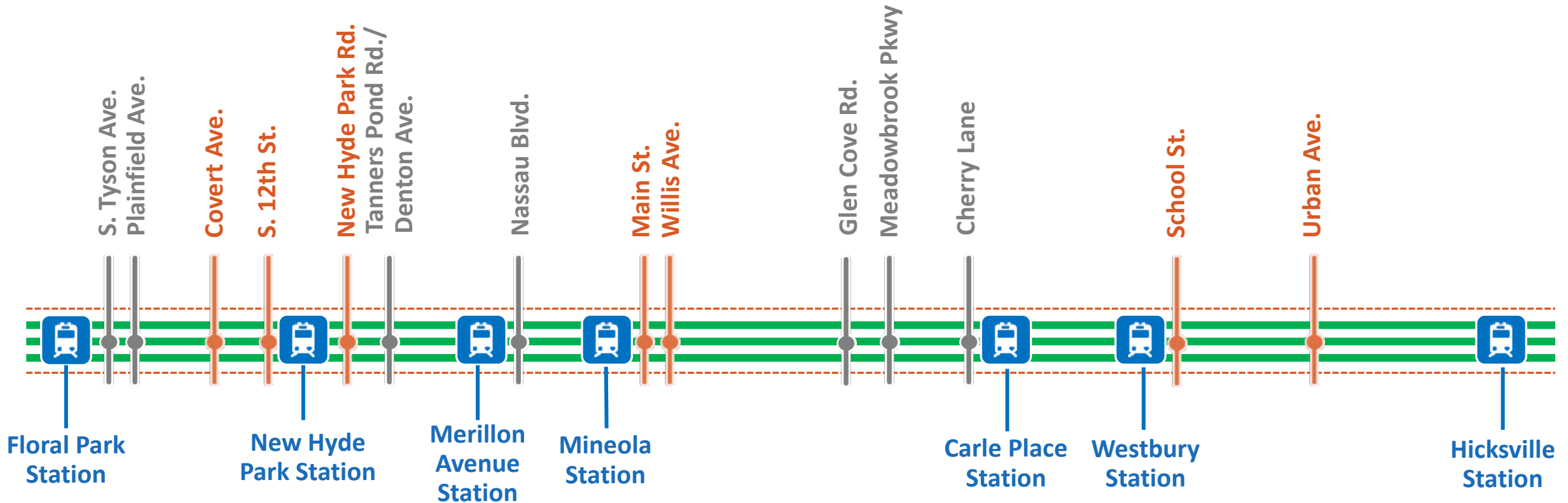


- Station Improvements
- Substations
- GS Grade Crossing Separations
- GC Grade Crossing Closures
- B Bridge Modifications/Replacement
- P Parking Facilities
- I Interlocking



Project Overview

LIRR Expansion Project Components



9.8-mile Main Line Segment from Floral Park to Hicksville

LIRR Expansion Project by the Numbers

■	Grade Crossing Closures	8
■	Bridge Replacements/Modifications	7
■	Station Improvements	6
■	ADA Elevators	13
■	Substation Replacements/Modifications	8
■	Interlocking Reconstructions	2
■	Retaining/Sound Walls	7.5 miles
■	Pedestrian Overpasses	6
■	Track	9.8 miles

Project Benefits



A BETTER COMMUTE



NOISE REDUCTION



**SAFER, QUIETER
CROSSINGS**



**LESS CONGESTION,
CLEANER AIR**



**STATION IMPROVEMENTS
& INCREASED PARKING**



**BETTER JOBS,
STRONGER ECONOMY**

LIRR EXPANSION PROJECT
- FLORAL PARK TO HICKSVILLE -
2019 MAJOR MILESTONES

New Hyde Park LIRR Station Enhancements

- Platform replacement to accommodate 12-car trains
- New platform canopies
- Platform furnishings and accoutrements including benches, shelters and signage
- CCTV security cameras to improve safety
- ADA-compliant mobility improvements including ramps
- Wi-Fi and USB charging stations
- Digital information display
- Interior and exterior station renovations

New Hyde Park Road Grade Crossing Elimination

- Designed in coordination with public input during EIS phase
- 5-lane underpass
- Pedestrian sidewalks on east and west sides
- Dedicated left-turn lane from southbound NHP Road onto Clinch Avenue
- Safer and uninterrupted flow of traffic



Grade Crossings

Grade Crossing



- Causes lengthy commutes for both drivers and LIRR customer
- Poses a safety risk to drivers, pedestrians and LIRR customers
- Contributes to noise and air pollution
- Crossing gates currently can close roadways for up to 30 minutes during a peak hour
- 6 fatal crashes at grade crossing locations in the LIRR Main Line corridor between 2007 to 2017

Grade Crossing Incidents



School Street 1947



School Street 2019

Urban Avenue Grade Crossing Elimination - Complete



Before Project



After 6 Months

Covert Avenue Grade Crossing Elimination - Complete





3TC's Approach to NHP 2020

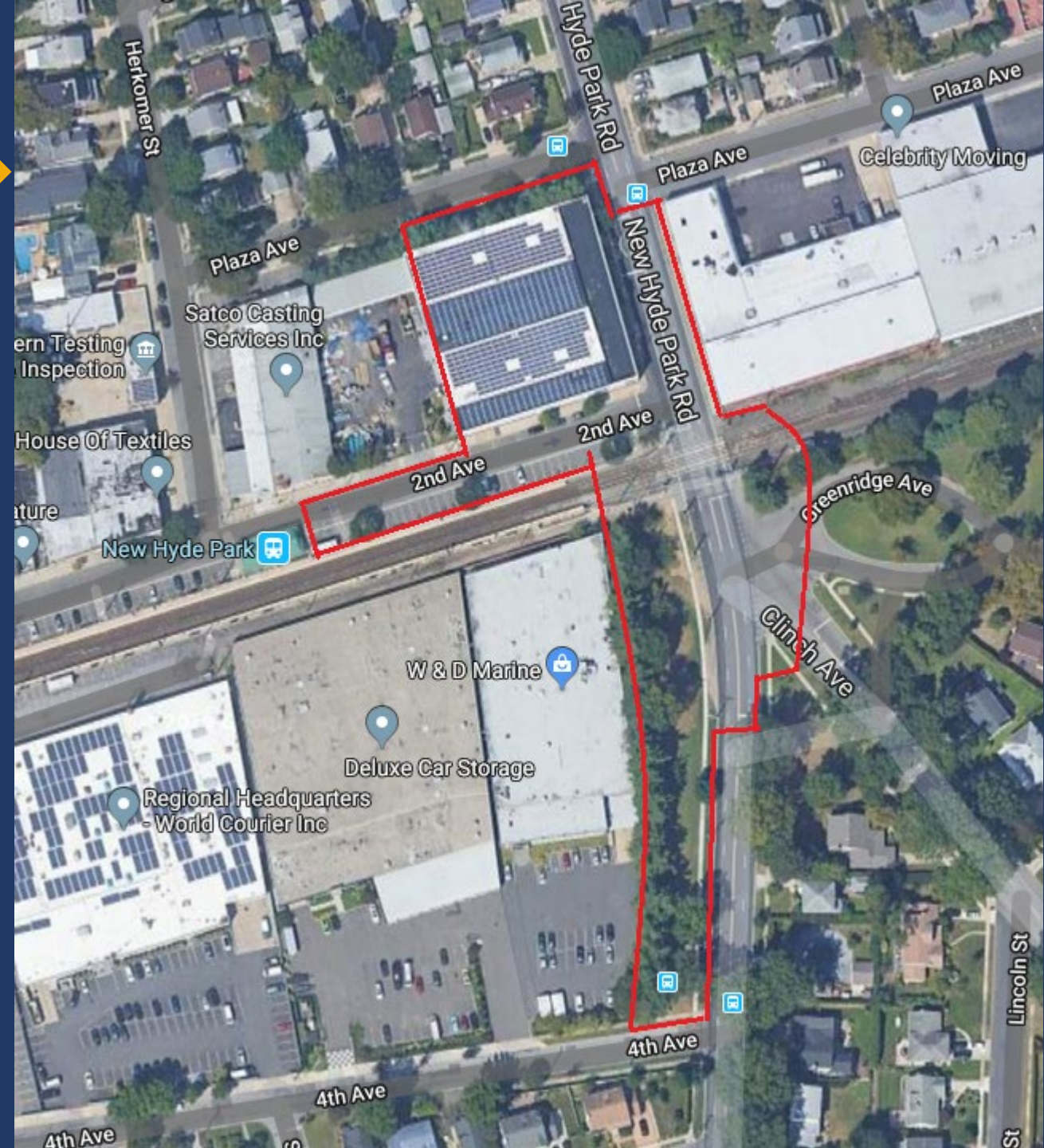
An aerial photograph of a city street intersection. A train platform with a white train is visible on the left. A large, modern building with a glass facade is on the right. The street is paved with asphalt and has a yellow curb. A blue semi-transparent box covers the lower half of the image, containing a list of bullet points. In the top right corner, there is a circular logo with a stylized 'N' and a compass rose.

Improved Schedule

- Full closure of New Hyde Park Road, from Plaza Avenue to 4th Avenue, for 7 months beginning February 3
 - Enables 7-month heavy civil construction period vs 9 months
- Advance work on NHP LIRR Station Enhancements
 - Maintain 10-car platform (instead of 6 cars)
 - Simultaneous work streamlines construction
- Eliminate frequent opening and closing of bypass road
 - Acclimates drivers to consistent alternate routes

Smaller Work Zone

- Lay down area at 115 New Hyde Park Rd. instead of 124 Covert Ave.
- Direct pedestrian access to LIRR station to remain open from east side of New Hyde Park Road
- No grade crossing next to active construction site



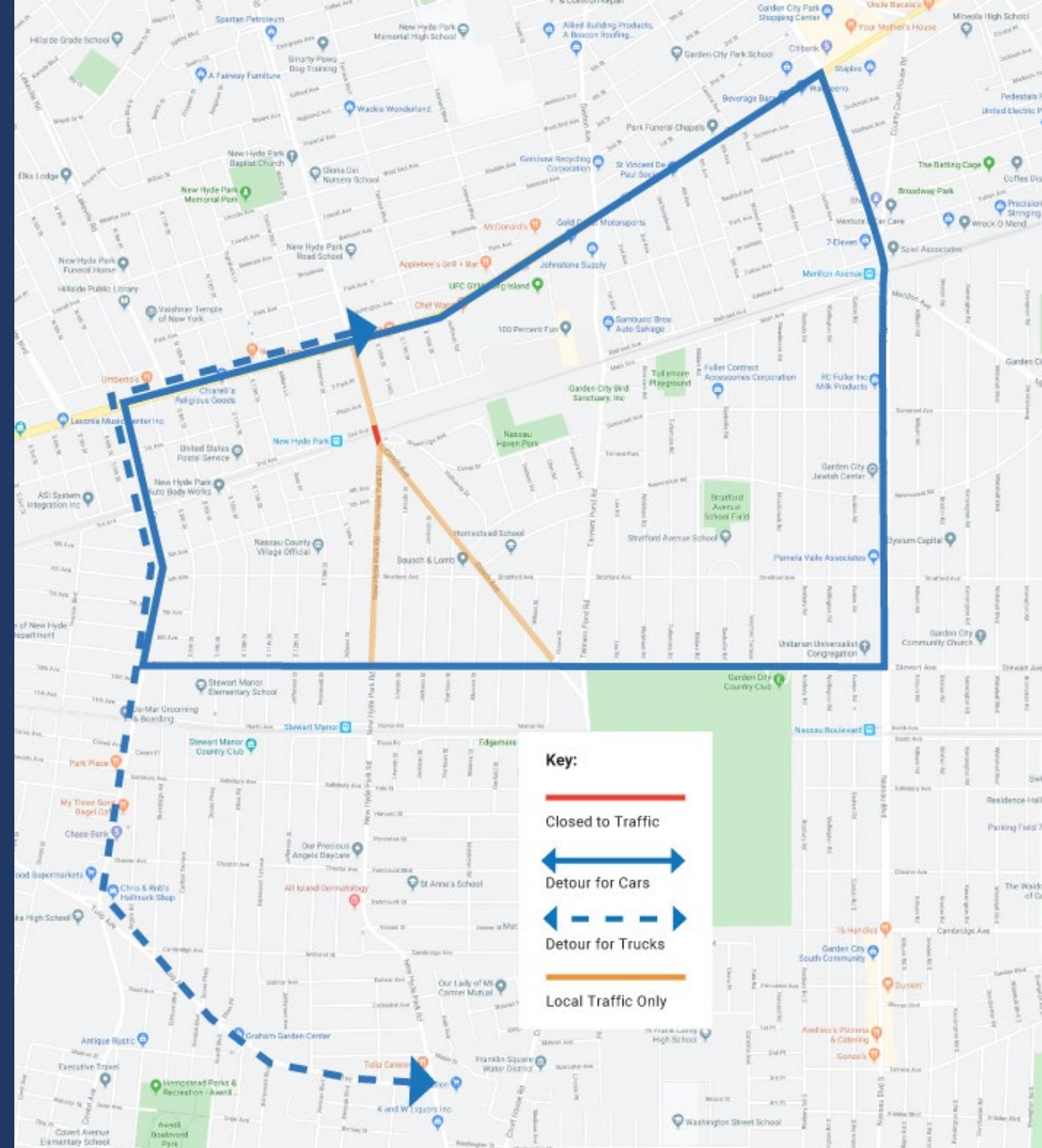


Improved Traffic Flow During Construction

- Access to Plaza Avenue East to remain open for a majority of construction (reduced truck traffic on residential streets)
- Maximizing summer months for heavy construction when traffic is lowest
- Separate detour route for commercial traffic
- Consistent notifications regarding road closure
- Covert Avenue detour messaging and signage resulted in 10-15% traffic reduction in NHP area since June 2019

Detour Plan

- Localized and regional signage plans
- Covert Avenue underpass will absorb most traffic
- Real-time coordination with NYSDOT to optimize signal timing on Jericho Turnpike

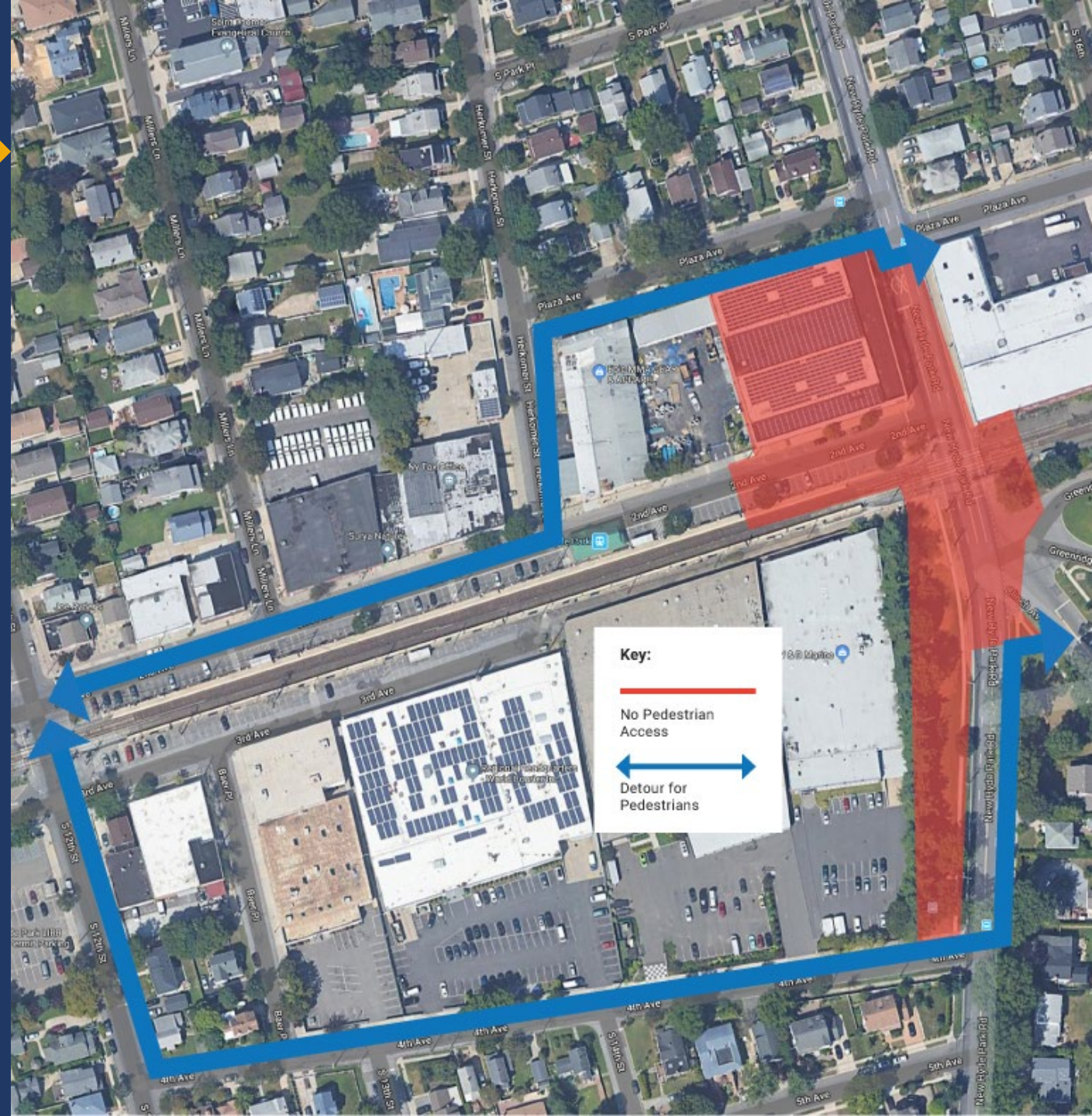


Temporary Station Pedestrian Access

- Temporary 10-car station platform will be available from Covert to S. 12th Street beginning February 3
- ADA compliant ingress and egress
 - 8 station access points
 - 3 ADA ramps
 - Safe crosswalks

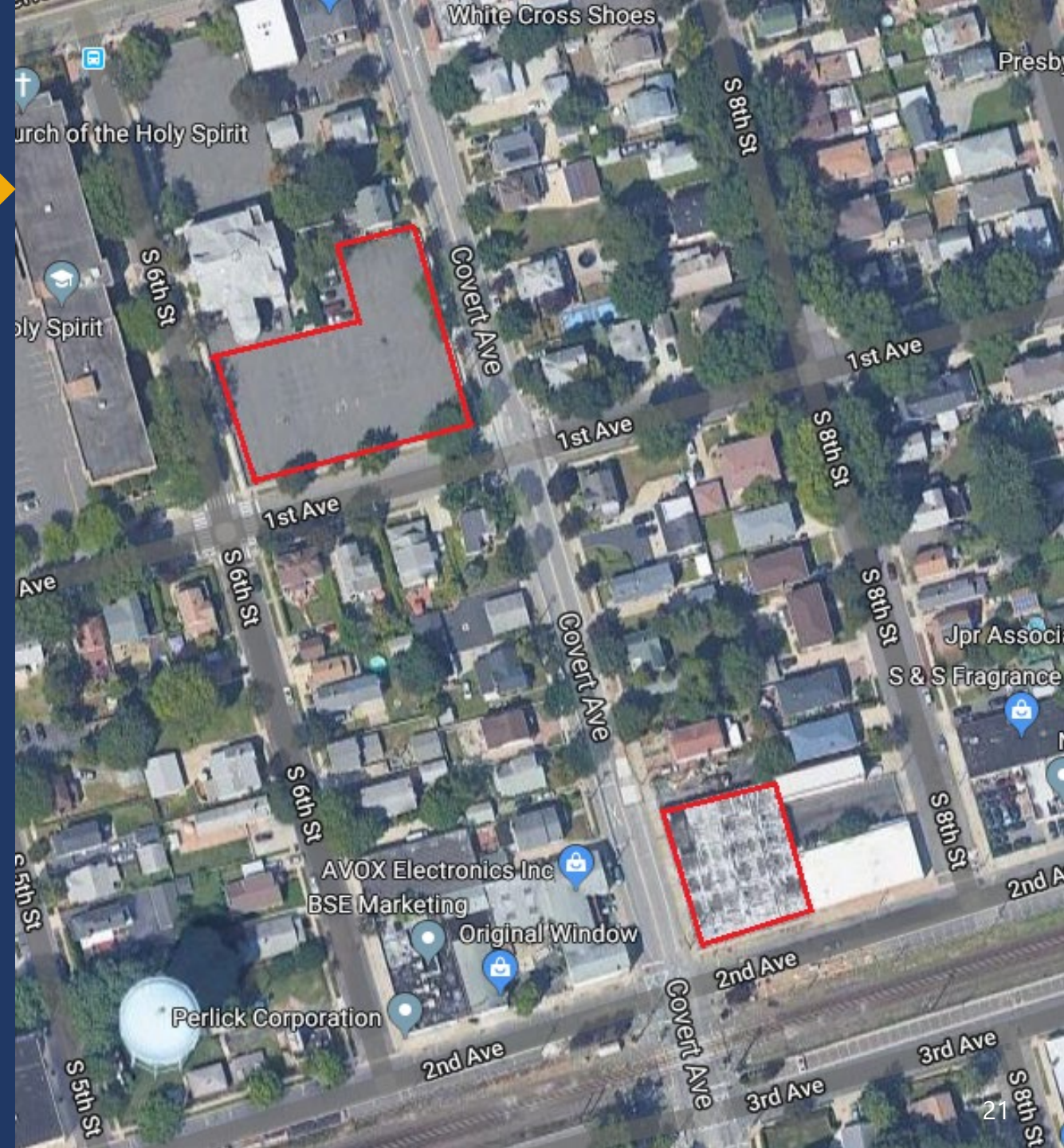
Pedestrian Detour

- South 12th Street access point
- 4th Avenue to remain available throughout construction
- Plaza Avenue West to remain accessible for first half of construction



Temporary Commuter Parking

- 3TC is working to secure over 100 temporary commuter parking spots
 - 124 Covert Avenue
 - Church of the Holy Spirit Parking Lot
- 2nd Avenue commuter parking to remain accessible





Community Coordination



Community Outreach Efforts

HYDE PARK SCHOOL

- Community Ambassadors
- Door-to-door outreach
- Outreach to businesses
- Village collaboration
- Construction signs
- Community Information Center
- Project website updates
- Eblasts
- 24/7 Hotline

Stakeholder Engagement to Date



The Project Team has undertaken an **unprecedented level** of community outreach. To date, **hundreds of meetings** have been held with elected officials, community leaders, homeowners, businesses, LIRR customers and other stakeholders. This input is being used to **improve designs** and **minimize construction impacts**.



Contact Us



24/7 Community Hotline
(516) 203 - 4955



Email

CommunityOutreach@LIRRExpansion.com



Website

www.LIRRExpansion.com
www.AModernLI.com



Community Information Center

114 Old Country Road
Mineola, NY 11501
See website for hours



Twitter

@AModernLI

